



Overview of Living in Community Model

1. What is Living in Community?

Living in Community is a unique initiative bringing together community organizations, sex workers, government, residents, businesses, and police. LIC works collaboratively to address health and safety issues connected to sex work and sexual exploitation, while balancing the interests of residents, businesses, and sex workers.

LIC believes that the marginalization of sex workers and the displacement of sex workers from one neighbourhood to another only increases health and safety risks for all community members, including sex workers. LIC takes the stand that the public disorder and violence connected to sex work is unacceptable, and that all community members and organizations have a role to play in making communities healthier and safer.

For more information, go to www.livingincommunity.ca

Living in Community purpose

To create communities that are healthier and safer for each and every community member in relation to sex work and sexual exploitation.

Objectives

- Build greater awareness, dialogue and responsiveness of multiple stakeholders
- Reduce and prevent sexual exploitation
- Increase direct services
- Provide transitioning and exiting options for sex workers
- Affect policy and legal change

Living in Community values

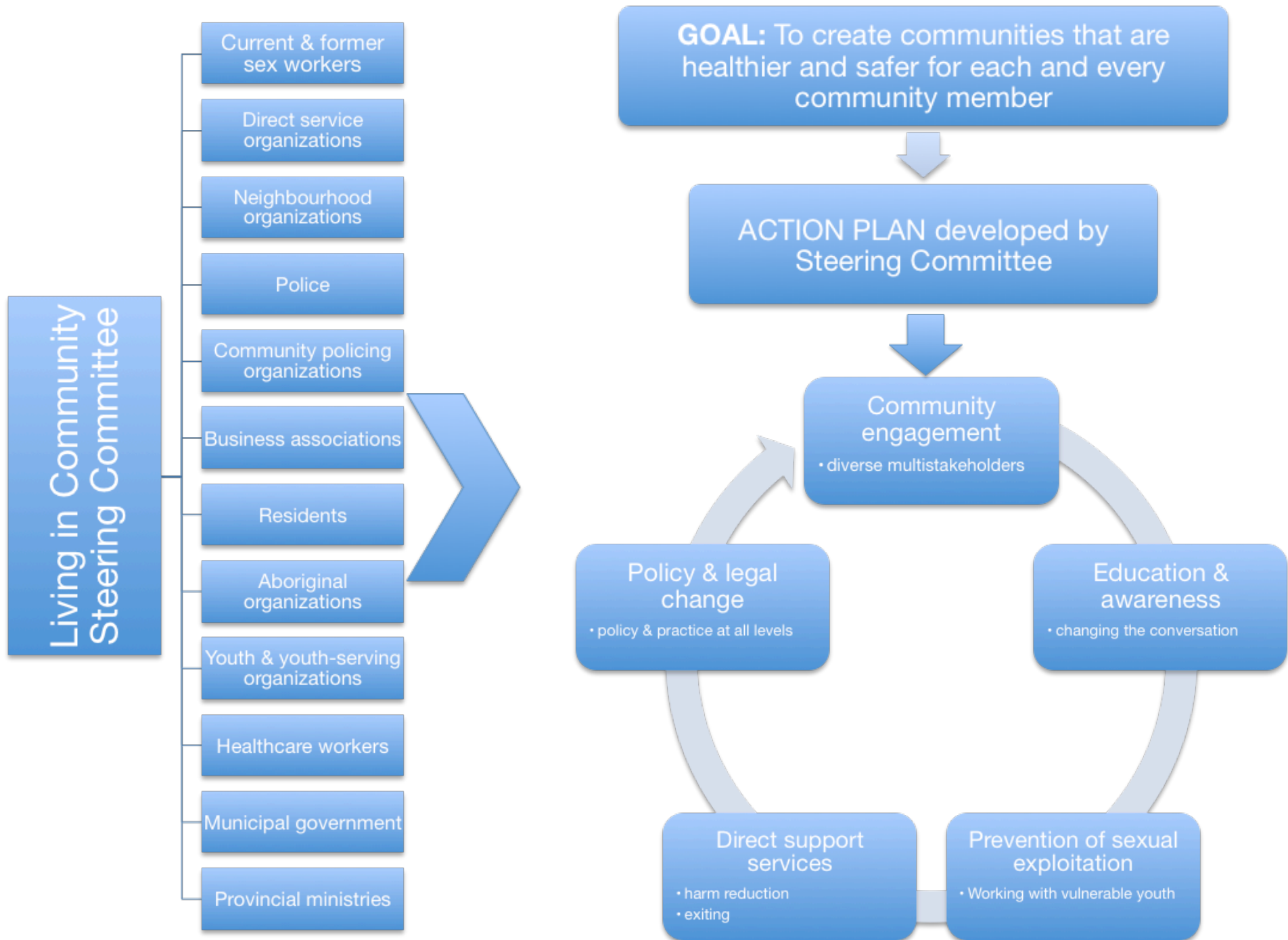
- Embracing diversity and respect for all
- Enabling participation
- Learning and self-growth as a path to change
- Taking a stance against exploitation and social injustice
- Creating understanding and building community
- Openness to listen and understand different perspectives

Governance

The work of LIC is governed by a diverse steering committee. Steering Committee sets priorities of Living in Community actions, oversees implementation of actions and with the broader community. All actions are discussed and agreed upon by the entire steering committee member to ensure that there is balanced approach to change.

The following diagram outlines Living in Community's governance and operations.

Overview of Living in Community process



2. Adapting the Living in Community model

The Living in Community model can be adapted to any community to address concerns about sex work and sexual exploitation. The LIC model is about a balanced approach to sex work and sexual exploitation that includes all voices in the process in order to create health and safety. The priority actions in each community are determined by the community itself based on the current context. The following steps will support you to adapt the LIC model to your community.

1. Start with current reality

- ✓ Understand sex work in the community
- ✓ Map key stakeholders and those impacted by sex work
- ✓ Ensure experiential representation

2. Clarify intention

What outcomes does your community want to focus on?

- ✓ Improve the safety and health of sex workers
- ✓ Reduce safety concerns for residents, businesses, and visitors related to the sex trade
- ✓ Improve healthy choices by children and youth
- ✓ Reduce sexual exploitation of youth

3. Create steering committee.

- ✓ Engage diverse community members to be a part of a steering committee to oversee the project.
- ✓ Ensure all voices are included in the process, including current and former sex workers with a diversity of background and experiences, organizations that provide direct support to sex workers, law enforcement, community policing associations, health, municipal and provincial government, neighbourhood organizations, residents, Aboriginal organizations, business, and youth & youth-serving organizations.
- ✓ Commit to creating safe space of mutual trust even where there is disagreement

4. Adapt LIC model that addresses current issues & needs

- ✓ Use experience and wisdom of Steering Committee members (and others) to identify needs & issues in community
- ✓ Prioritize which action areas to focus on and come to agreement on common objectives and actions, for example:
 - Increase the capacities of local residents to address local challenges related to sex work and sexual exploitation
 - Educate children and youth about how to prevent sexual exploitation
 - Enhance and coordinate local services for sex workers
 - Provide training and employment opportunities for sex workers wanting to exit the sex trade

5. Develop a work plan to implement model